

GWI Eyeball Mini

High Output

- White 5000K
- Red 627nm
- Blue 455nm

Chip Onboard Light Emitting Diode

M12, 4 Pin Connector, Pin 1 +, Pin 3 -

Pin 2 & 4 Available for Optional Dimming & Switching

24 Volts DC

.2 Amp Draw

10-24 Mounting Holes

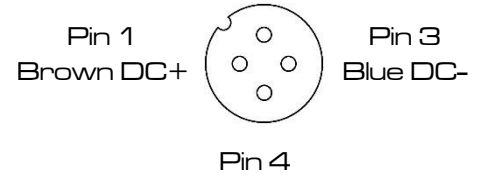
Black Anodized 6061 T6 Body

Designed & Manufactured in Canada

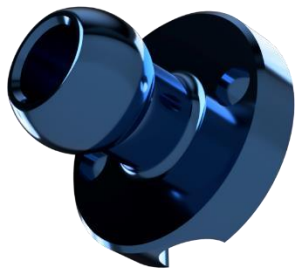


M12 4 Pin (Female)

Pin 2



Available for Optional Dimming or Switching



Compatible with
Swivellink XS
AFSB-1 XS

